

HUMANS AT SEA

Peter K. Sørensen
Vice President
FORCE Technology



Examples of how we use simulators and design simulator exercise to support a high level of training transfer of HF issues - and optimize usability

Situational awareness

Assertiveness

Leadership style

Confirmation bias

Design – usability

The future

Examples of how we use simulators and design simulator exercise to support a high level of training transfer of HF issues - and optimize usability

Situational awareness

Assertiveness

Leadership style

Confirmation bias

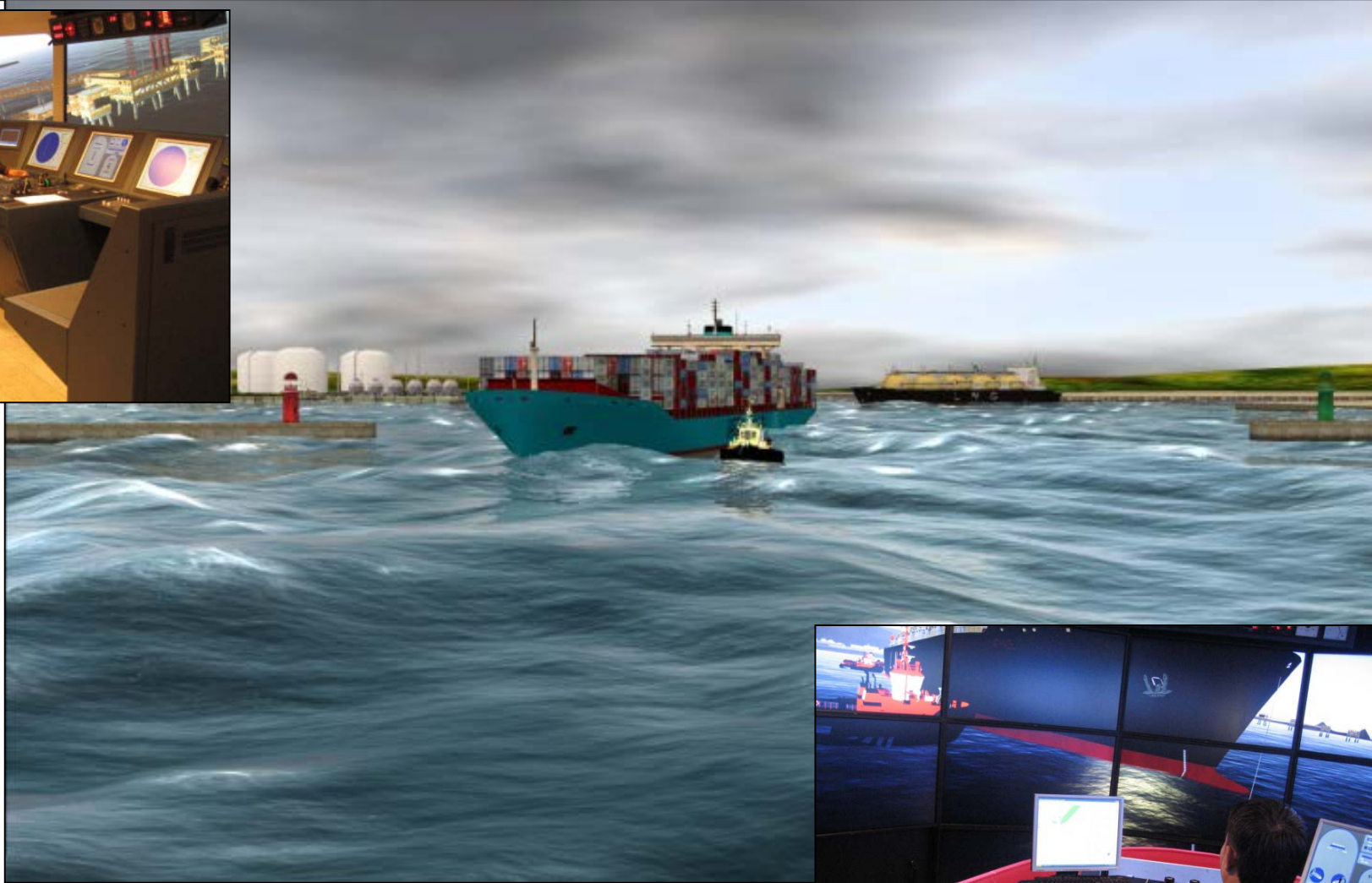
Design – usability

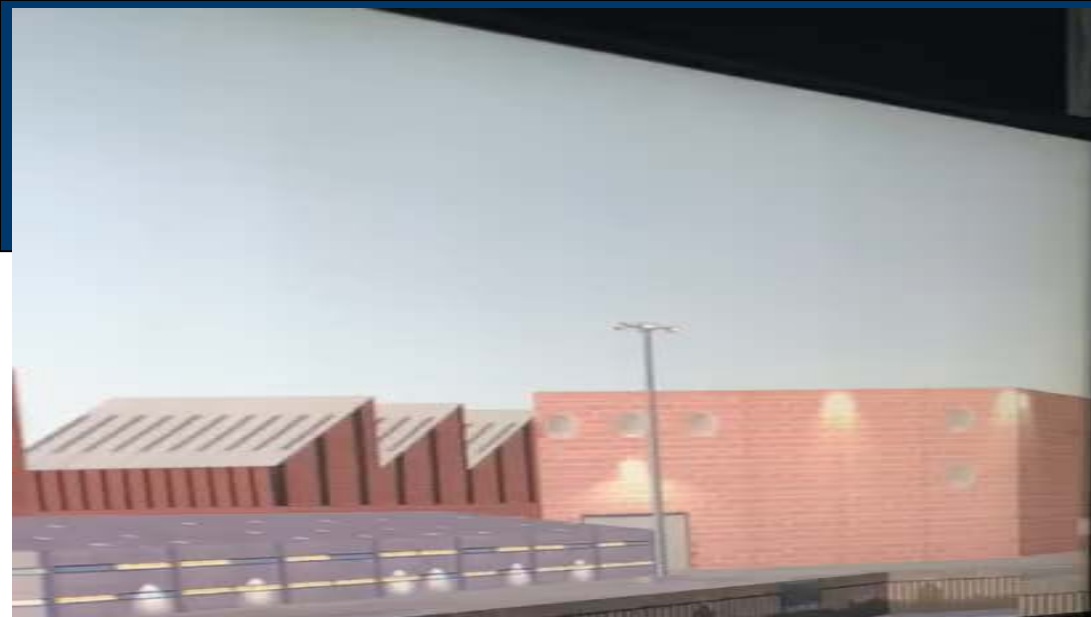
The future

Increased training transfer



Need for a high degree of realism





Situational awareness

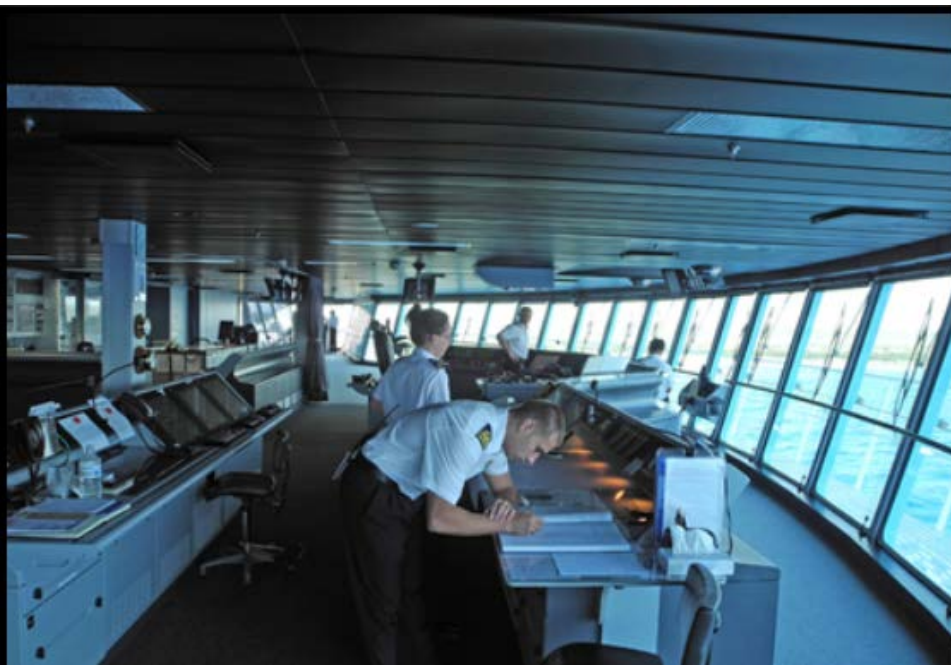
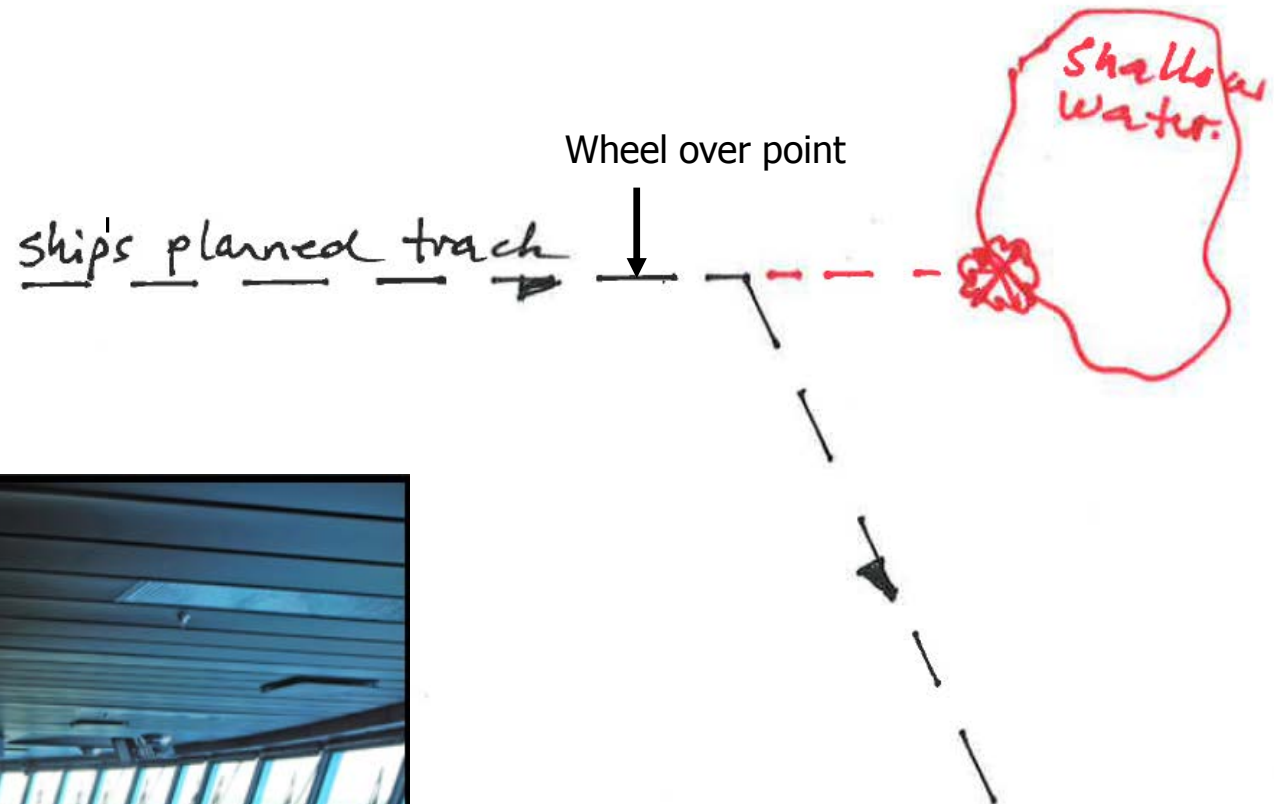
"What do we mean with " Situation Awareness?"



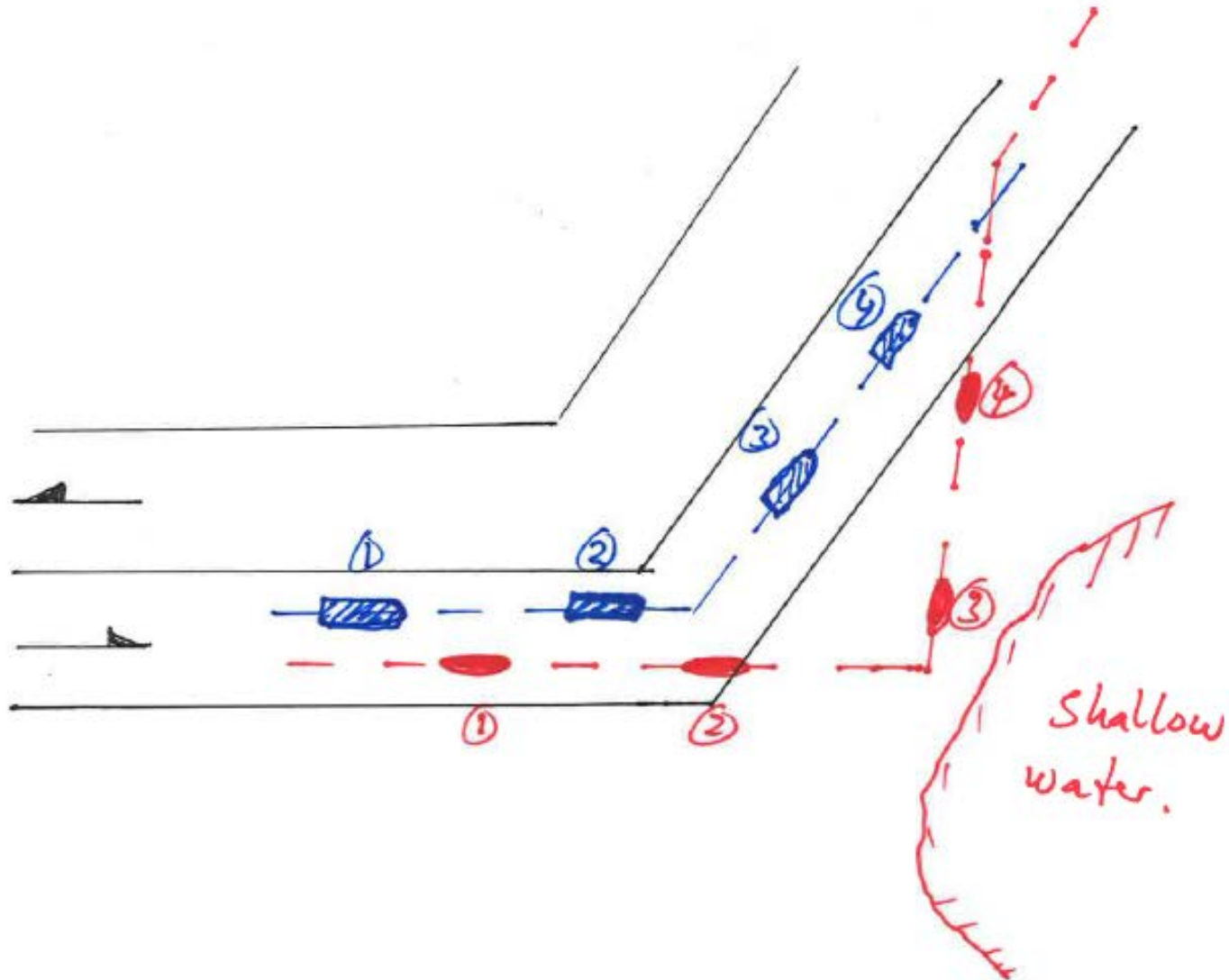
"Where is the sailing ship?"



Assertiveness



Confirmation bias – example from Singapore Strait



Design issues: Incoherent spatial layout: VHF ex.



Location of VHF Phone



Place of work of the officer, who will be using it (by the ARPA & by the engine telegraphs)



Increased training transfer

Psychological profile
Psychometric tests
Individual learning goals

**Integration of eye-tracking
in debriefings**

**During simulation exercises -
Monitor psychological response
and adapt level of difficulty**

**VR based simulation
exercises using
eye-tracking**